

# DIGMAX II XP **BS IV**

**SUPERIOR PRODUCTIVITY**  
**RELIABLE PERFORMANCE**



Fuel  
**Efficient**



Reach  
**Higher**



Breakout Force  
**Higher**



Maintenance Cost  
**Low**



Cycle Time  
**Fast**

## SPECIFICATIONS



### ENGINE (BS IV)

- Proven, powerful and fuel efficient Kirloskar 4R1190TA water cooled diesel engine.
- Gross Power: 55 kw (74.5 HP) @ 2200 RPM
- Max Torque (Gross): 400Nm @ 1200 ± 100 RPM
- CEV - IV emission norms



### HYDRAULIC

- Hydraulic Pump - Axial Piston Pump
- Maximum flow 117.5 lpm @ 2200 RPM
- System main relief setting 225 bar
- Variable flow, close centre pump unloading energy efficient hydraulic system.
- Control Valve - Sectional Valve



### TRANSMISSION

- Four speed (4F, 4R gear) Syncro shift reversing shuttle transmission provides superior traction, gradeability, higher force while entering pile or during dozing operation.
- Neutral start provision prevents starting while shuttle is engaged.
- Gear lever with transmission disconnect switch adds to the overall ease of gear shifting.



### TYRES

- Front (Std) 9.00 x 16 - 16PR
- Rear (Std) 16.9 x 28 - 12PR (Industrial)



### TRAVEL SPEED

- |                        | <b>F/R gear</b>            |
|------------------------|----------------------------|
| • 1 <sup>st</sup> Gear | 5.3 kmph/ 4.6 kmph         |
| • 2 <sup>nd</sup> Gear | 8.5 kmph/ 7.0 kmph         |
| • 3 <sup>rd</sup> Gear | 18.5 kmph/ Not recommended |
| • 4 <sup>th</sup> Gear | 36.6 kmph/ Not recommended |



### BRAKES

- Service brakes Hydraulically actuated dual line, self adjusting, oil immersed, multi disc type on rear axle.
- Parking brakes Hand-operated caliper disc brakes



### AXLES

- Front steer axle with 16° oscillation for maximum ground contact in undulated condition.
- Rear drive axle, rigidly mounted to chassis.



### STEERING

- Hydrostatic power steering in front wheel
- Hydraulic supply from pump via priority valve for quick response steering
- Working pressure: 120 bar



### WEIGHT

- Operating Weight 8190 kg



### SERVICE REFILL CAPACITIES

- |                        |             |
|------------------------|-------------|
| • Hydraulic system oil | 80 litres   |
| • Fuel tank            | 134 litres  |
| • Engine coolant       | 15 litres   |
| • Engine oil           | 11.5 litres |
| • Transmission oil     | 16.5 litres |
| • Rear axle oil        | 17.1 litres |
| • Brake reservoir oil  | 1.0 litre   |



### EQUIPMENT MONITORING SYSTEM (OPTIONAL)

- GPS + GSM based equipment monitoring system provides sms alerts for effective equipment management and acts as a diagnostic tool.



### WARNING MESSAGE-SMS, ONLINE

- Engine Coolant Temperature
- Hydraulic Oil Temperature
- Transmission Oil Temperature
- Engine Oil Pressure
- Battery Charging Status
- Machine Idle Information
- Fuel Level Information



### OPTIONAL ACCESSORIES

- Heavy duty rear tyres: 14x25-20 PR
- Rock Breaker
- Trenching Buckets- 0.09 m<sup>3</sup>, 0.12 m<sup>3</sup>, 0.18 m<sup>3</sup>
- Special Purpose Bucket - 0.30 m<sup>3</sup>
- Multi Purpose (6-in-1) Bucket
- 300 mm Trench Bucket (Fibre Cable Laying Application)
- Coal Bucket - 1.5 m<sup>3</sup>

## PERFORMANCE DIMENSIONS

**DIGMAX 101 XP**

### LOADER PERFORMANCE (Figure 1)

M :	Dump height (Cutting edge)	3.00	m
N :	Load over height (Cutting edge)	3.51	m
O' :	Pin height (Cutting edge)	3.70	m
P :	Pin forward reach	0.43	m
Q :	Reach of ground	1.57	m
R :	Max reach at full height	1.22	m
S :	Reach at full height - Bucket dumped	0.85	m
T :	Below ground level dig depth	0.13	m
U :	Rollback at ground	45	deg
V :	Dump angle	45	deg
	Bucket breakout force	6425	kgf
	Loader arm breakout force	5777	kgf
	Payload	1980	kg
	Return to Dig	Available	
	Self Leveling	Available	
	Loader Bucket Capacity	1.2	m <sup>3</sup>

### EXCAVATOR PERFORMANCE (Figure 1 & 2)

A :	Max dig depth (Bucket in dump Position)	4.80	m
B :	Reach ground level to rear wheel center	6.97	m
C :	Reach ground level to slew center	5.65	m
D :	Reach at full height to slew center	2.23	m
E :	Side reach to center line of machine	6.00	m
F :	Max working height (Stab's fully out)	6.30	m
G :	Max load over height (Stab's fully out)	4.39	m
H :	King post travel	1.00	m
J :	Bucket rotation power	187	deg
	Bucket tear out force	6018	kgf
	Dipper tear out force	3250	kgf
	Lift capacity to bucket at full reach (SAE J31)	1554	kgf
	Co-axial Carriage		
	Excavator Bucket Capacity	0.26	m <sup>3</sup>

### STATIC DIMENSION (Figure 3, 4 & 5)

AA :	Overall length (Transport mode)	6.28	m
A1 :	Overall length (Travel mode)	7.85	m
BB :	Wheel base	2.14	m
CC :	Rear wheel to slew center	1.38	m
DD :	Minimum ground clearance	0.35	m
EE :	Slew Ground clearance	0.59	m
GG :	Height to top of cab	2.88	m
HH :	Overall height	3.78	m
JJ :	Track width - Rear	1.75	m
KK :	Track width - Front	1.87	m
LL :	Width over bucket	2.38	m
L1 :	Width (Transport mode)	2.56	m

Figure 1

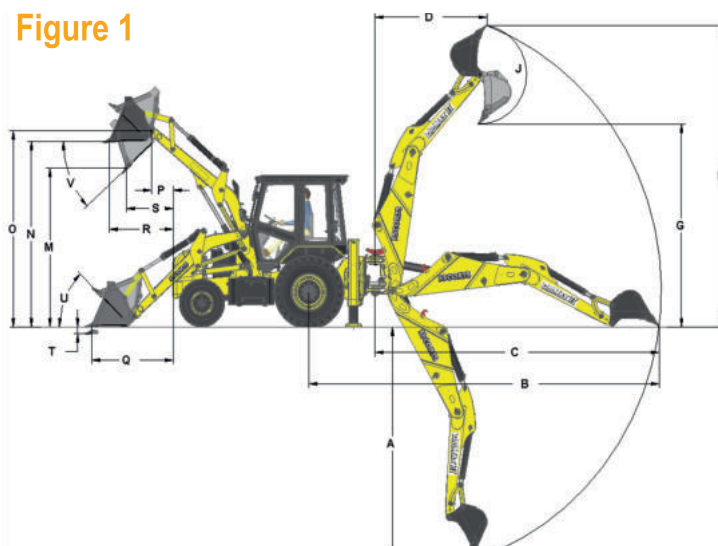


Figure 2

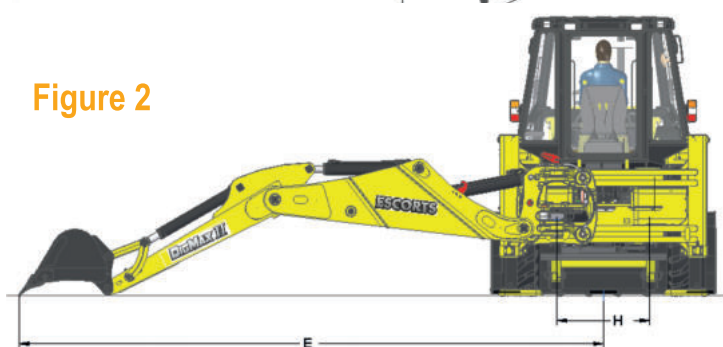


Figure 3



Figure 4

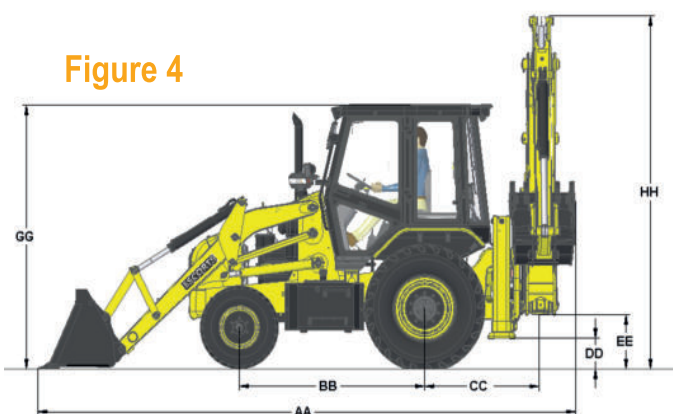


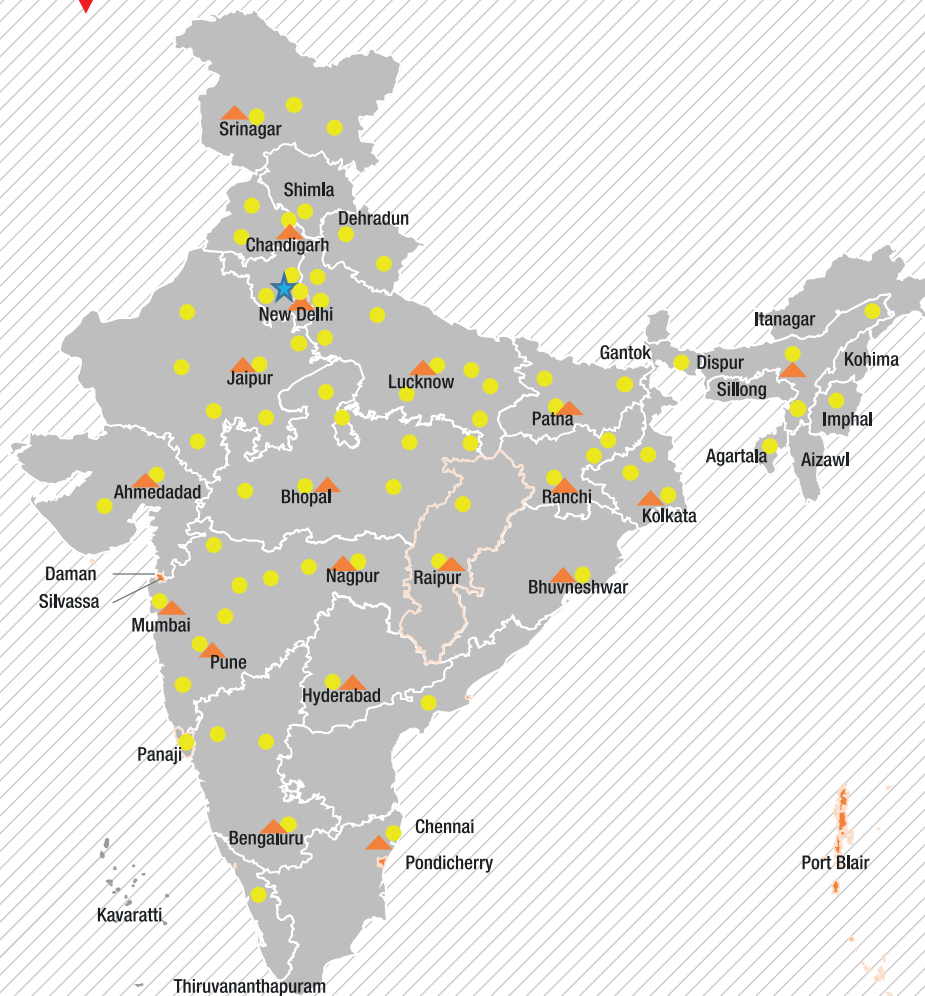
Figure 5



### Warning

All dimensions, weights, timings mentioned are with standard tyres, dipper, buckets & are variable within  $\pm 5\%$   
ECE has the right to change values given & design shown without giving a notification.

## OUR REACH



★ Head Office ▲ 17 Business Center ● 73 Dealers | 825+ Customer Touch points (CTP) |



**Toll Free No.:**  
**1800-180-4488**  
(Timings: 9.30 am - 6.00 pm, Monday to Friday)

e-mail: [ekl\\_g.ece.marketing@escortskubota.com](mailto:ekl_g.ece.marketing@escortskubota.com)

**Escorts Kubota Limited (Construction Equipment)**  
Plot No. 219, Sector- 58, Ballabhgarh- 121 004, Faridabad, Haryana (INDIA)  
**Tel.:** 0129-2306574/2306598/2306571  
**Fax:** 0129-2306572 **Website:** [www.escortsgroup.com](http://www.escortsgroup.com)



Download Customer App  
for more details

Authorised Dealer

• The information contained in this leaflet is intended to be of a general nature only. • We reserve the right to change specifications without notice. • All Dimensions and weights are variable within +/-5%.

(Accessories as shown in the picture may not be the part of standard fitment and are subject to change without prior notice.)