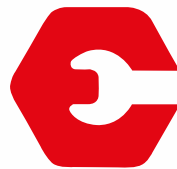


F 23



ESCORTS

CONSTRUCTION EQUIPMENT



F 23



Capacity
23 T



Boom Height
(With Fly Jib)
22.3 M



Snatch Block
15 T Lifting

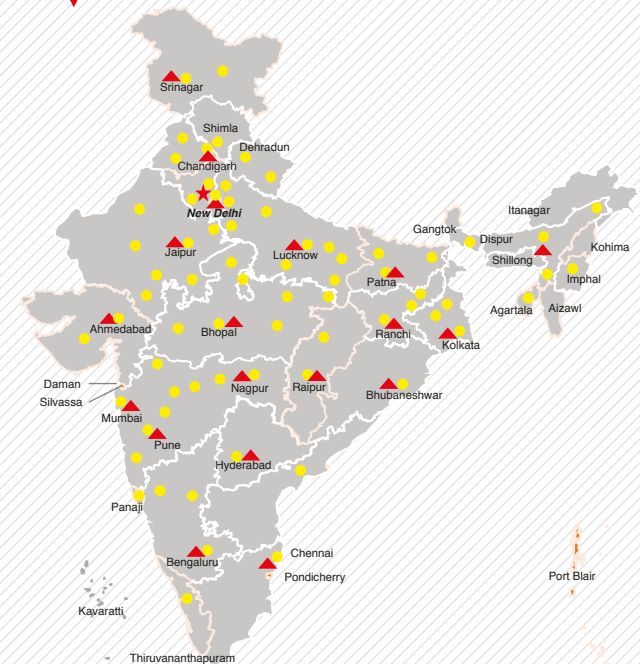


Creep Speed
1.3 kmph



Axle
Heavy Duty

OUR REACH



★ Head Office | ▲ 17 Business Center | ● 73 Dealers & 250+ branches | ■ PAN INDIA - 825+ Network to support as Service and Spares

ADDRESS:

North Zone

ESCORTS LTD. - CONSTRUCTION EQUIPMENT
4th Floor 409, Jasola Vihar,
Elegance Tower, Near Apollo Metro Station,
New Delhi -110019

East Zone

ESCORTS LTD. - CONSTRUCTION EQUIPMENT
Eco Centre, Ambuja Neotia,
609, 6th Floor, EM Block,
Salt Lake Sector-V, Kolkata – 700091

West Zone

ESCORTS LTD. - CONSTRUCTION EQUIPMENT UNIT 1,
3rd Floor, A-Wing, Times Sqaure,
Andheri - Kurla Road, Opp. Mittal Industrial Estate,
Andheri (East), Mumbai 400059 (Maharashtra)

South Zone

ESCORTS LTD. - CONSTRUCTION EQUIPMENT
1st Floor, Bearing No - FF 2, in Subham Square,
Survey Number 41/9, 1st Main Road and 1st Street,
Tarambakkam, Porur,
Chennai - 600116

(Accessories as shown in the picture may not be the part of standard fitment and are subject to change without prior notice.)

MKT/21, 1/F 23



GET IT ON
Google Play
Download Customer App
for more details

Authorised Dealer

Toll Free No.:
1800-180-4488
(Timings: 9.30 am - 6.00 pm, Monday to Friday)

Escorts Construction Equipment: Plot No. 219, Sector-58, Ballabhgarh- 121004, Faridabad, Haryana (INDIA) Tel.: 0129-2306574/2306598/2306571
Fax: 0129-2306572 **Website:** www.escortsgroup.com

e-mail: ece.help@escorts.co.in

•The information contained in this leaflet is intended to be of a general nature only. •We reserve the right to changed specifications without notice. •All Dimensions and weights are variable within +/-5%.

SPECIFICATIONS

	Rated Capacity	
23 Tonne at	1.5 m radius	
900 kg at	16.6 m radius	
Max Hook Height	22.3 m	

	Engine (Bs Iv)	
Volvo – Eicher make CEV BS IV Diesel Engine, Model E494TCI, High Pressure Common Rail System (HPCR) Technology, Turbo Charged Water Cooled, ECU Control Engine Management System, Developing 74Kw/101 HP @ 2200 RPM or Equivalent Engine		

	Transmission & Clutch	
Engine is coupled with Synchromesh Transmission Gear Box and Auxiliary Gear Box with high/low & 2WD/4WD mode selector		
Clutch	Single, dry type friction clutch plate (self adjusting)	
Clutch Actuation	Pneumatic Assisted Hydraulic clutch	
Speeds	10 forward and 2 reverse	
Max Travel Speed	40 Kmph	
Creep Speed	1.3 Kmph	
Gradeability	40% unladen	

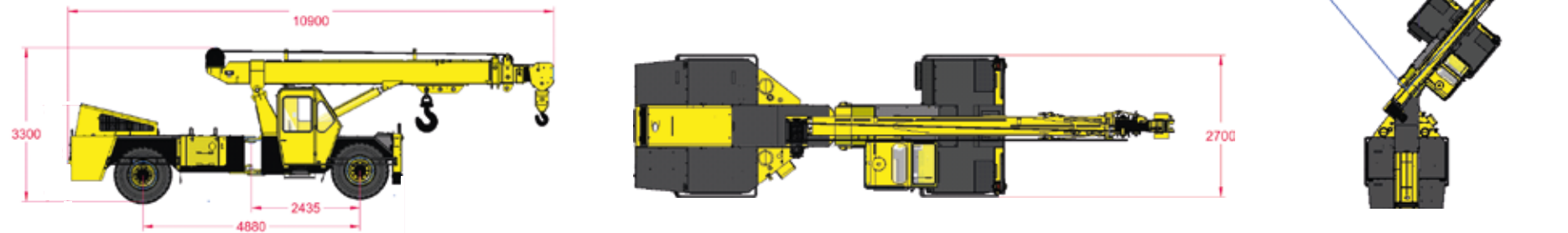
	Steering	
Fully power orbitrol with twin hydraulic double acting rams Type Articulated power steering, through steering wheel.		
Articulation	Up to 35° on either side	
Turning Radius	7.85 m	

	Control Valve	
6 spool double acting with a built-in relief and auxiliary valves		

	Axles	
Front	Rigidly Mounted	
Rear	Mounted with two semi-elliptical springs	
Make	TATA	

NOTE Technical modification reserved. All dimensions & weights are variable within ± 5% over indicated values.

: DIMENSIONS (Ref.) & AREA OF OPERATION



	Operating Weight	Travel	WORK (BOLTABLE CWT)
Front Axle Weight	8990 Kg	8680 Kg	
Rear Axle Weight	10200 Kg	10850 Kg	
Total Weight	19190 Kg	19530 Kg	

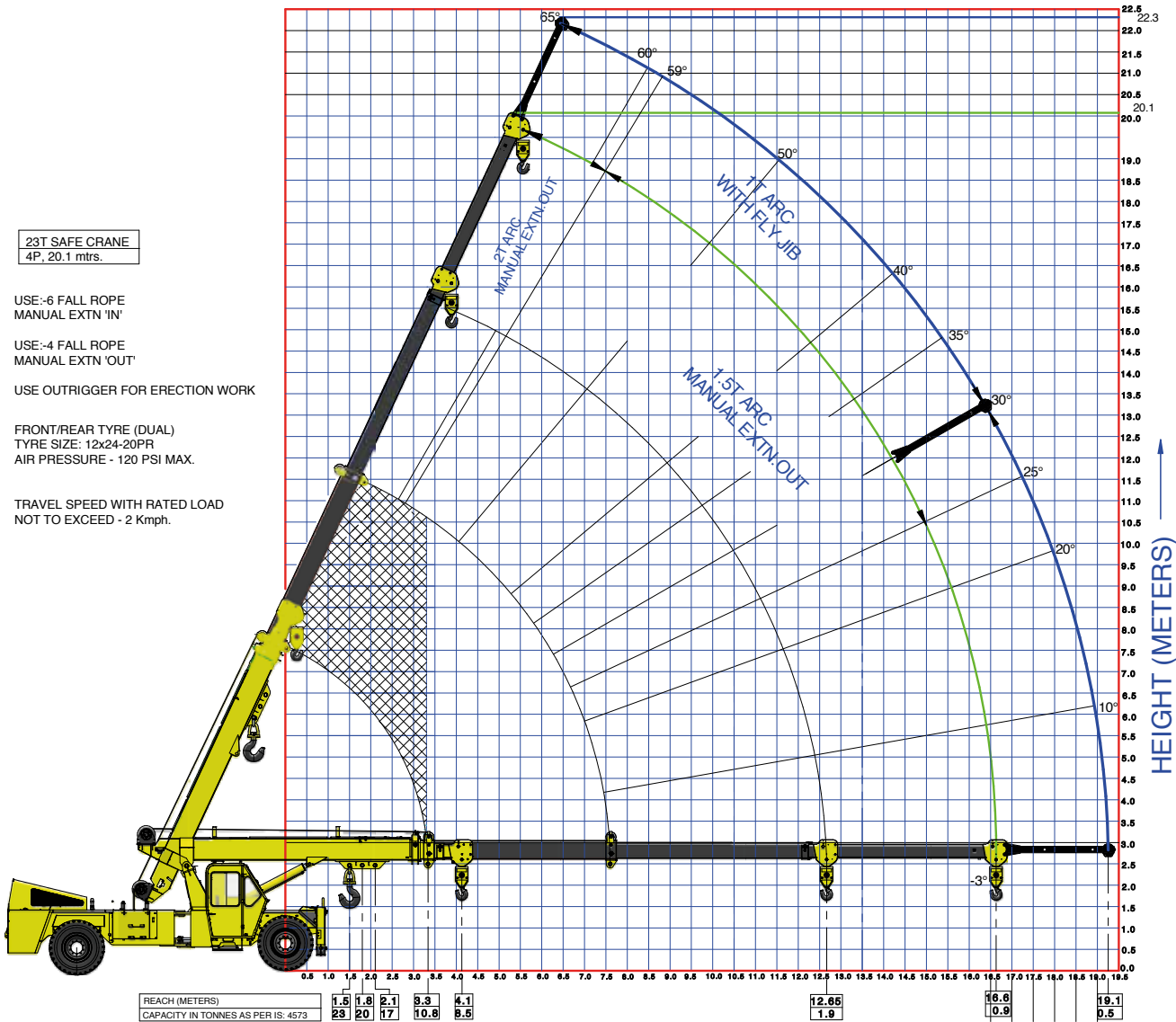
	Capacities	
Fuel Tank	220 ltrs.	
Hydraulic tank	181 ltrs.	

	Safety System	
Safe Load Indicator with Hydraulic Cut off		
Safety brakes on Hoist		
Hose Protection failure Device		
Rope Compensating Snatch Block		
Equipment Monitoring System		
Rear View Camera with LCD		
Battery Cut off Switch		

	Standard Accessories	
Operator Cabin		
Mobile Charger		
Concealed Lockable battery		
Tyre Guard		
Rear View Camera		
Helper Seat Platform		
Beacon Lamp		
Safe Load Indicator		
Drag Winch		
Fly Jib		
EMS		

	Optional Accessories	
RHINO Hook		
Fire Extinguisher		

LOAD CHART
F 23



Rated loads are calculated for operation on leveled surface.