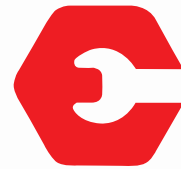
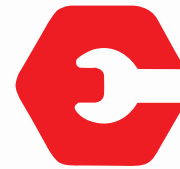


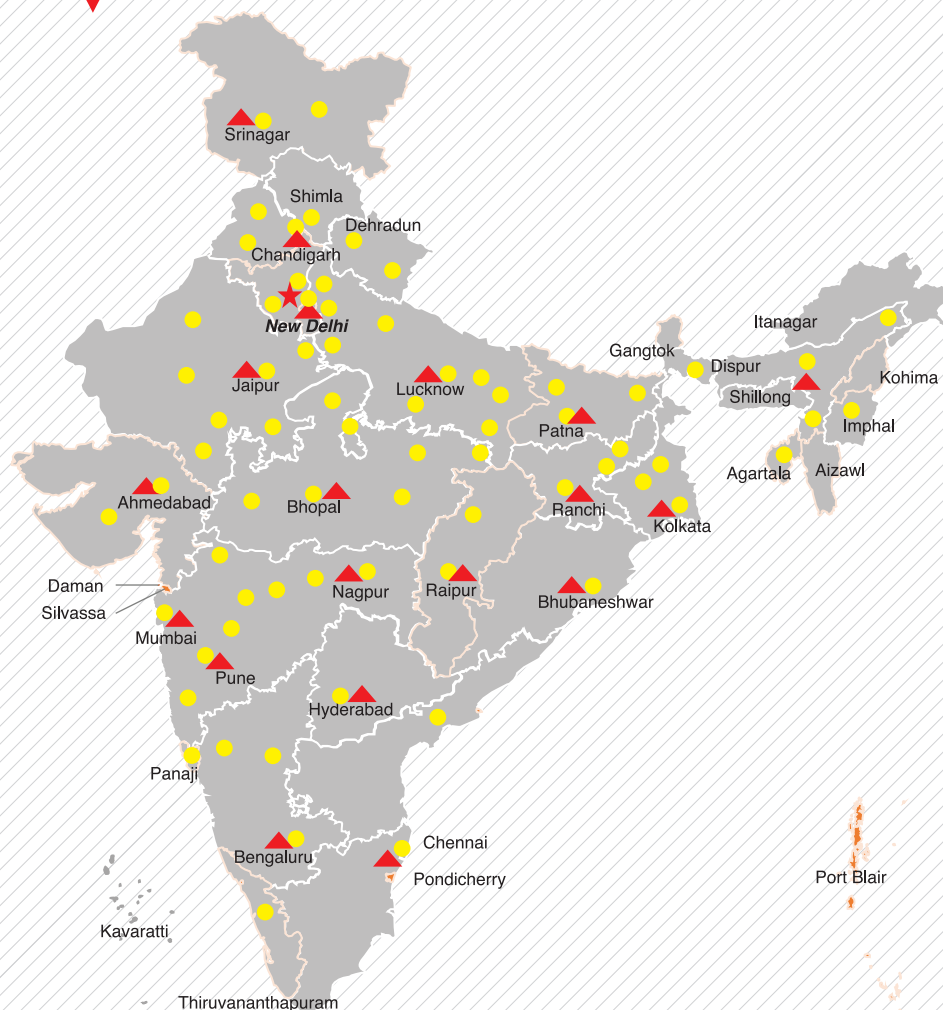
# TRX 2319



## ESCORTS CONSTRUCTION EQUIPMENT



OUR REACH



★ Head Office | ▲ 17 Business Center | ● 73 Dealers & 250+ branches | ■ PAN INDIA - 825+ Network to support as Service and Spares



**Toll Free No.:**  
**1800-180-4488**  
(Timings: 9.30 am - 6.00 pm, Monday to Friday)

e-mail: [ece.help@escorts.co.in](mailto:ece.help@escorts.co.in)

Escorts Construction Equipment: Plot No. 219, Sector- 58, Ballabhgarh- 121 004, Faridabad, Haryana (INDIA) Tel.: 0129-2306574/2306598/2306571 Fax: 0129-2306572 Website: [www.escortsgroup.com](http://www.escortsgroup.com)



GET IT ON  
**Google Play**  
Download Customer App  
for more details

Authorised Dealer

MKT/21.1/TRX - 2319

(Accessories as shown in the picture may not be the part of standard fitment and are subject to change without prior notice.)

# TRX 2319



Capacity:  
**23 T**



Boom Height  
(with fly jib)  
**22.0 M**



Equipment  
Monitoring System  
**EMS**



Creep Speed  
**1.3 kmph**



Stability  
**Better**

• The information contained in this leaflet is intended to be of a general nature only. • We reserve the right to changed specifications without notice. • All Dimensions and weights are variable within +/-5%.

SPECIFICATIONS



RATED CAPACITY

Capacity 23T @ 1.5 m radius  
0.9T @ 16.6 m radius



ENGINE (BS IV)

Volvo - Eicher make CEV BS IV Diesel Engine, Model E494TCI - High Pressure Common Rail System (HPCR) Technology, Turbo Charged Water Cooled, ECU Control Engine Management System, Developing 101 Kw/137HP @ 2200 RPM or Equivalent Engine.



TRANSMISSION & CLUTCH (HYDRAULIC)

Drive 2 Wheel Drive  
Type Synchromesh gear box with auxilliary gear box  
Travel Speeds Speed 12 forward and 2 reverse  
41 kmph (unladen)  
Clutch Single, Dry type friction clutch plate  
Clutch Actuation Pneumatic assisted Hydraulic clutch.  
Gradeability 35% unladen



STEERING

Type Articulated power steering, through steering wheel  
Articulation Up to 35° on either side  
Turning Radius 8.5 m approx



BRAKES

Service  
Rear Wheel Air operated brakes on rear axle.  
Front Wheel Pneumatically assisted hydraulic brakes.  
Parking  
Rear Wheel Spring loaded brake, Air-released on rear axle.  
Front Wheel Pneumatically assisted Spring loaded, fail safe hydraulic actuated brakes on front axle.



TYRES

Front 12.00 X 24 - 20 PR (Four nos.)  
Rear 17.5 X 25 - 20 PR (Two nos.)



TRACK

Front 2150 mm (Center of twin wheels)  
Rear 2000 mm (Center of wheel)  
Wheel Base 4800 mm



AXELS

Front Fabricated with front frame  
Rear Drive axle, mounted on semi elliptical springs



BOOM

Telescoping 4 parts boom  
3 parts hydraulically powered & fully synchronized. 4<sup>th</sup> part power extended & manually pinned for safety (Use 6 falls when mechanical extension is retracted) (Use 4 falls when mechanical extension is extended)  
Derricking Through double acting jacks

NOTES

- Maximum Load Lifting Capacity 23T
- Maximum Boom Height 19 m/ 22 m with fly jib
- Maximum Horizontal Reach 16.6 m
- 12T can be lifted to an under hook height of 11.7 m
- 8T can be lifted to an under hook height of 14.8 m
- Telescope capacity (Laden) off snatch block - 9T



HOIST MECHANISM

Hoist Hydraulic winch. Six/ four falls.  
Rope dia 13 mm



HYDRAULIC SYSTEM

Tandem vane pump - Craning : 46 CC  
Steering pump - Steering : 26.4 CC



CONTROL VALVE

- Proportional control valve hydraulically actuated through joy stick 3 spool double acting with a built in relief and auxiliary valves.
- 2 spool double acting control valve for outrigger operation.



ELECTRICAL SYSTEM

24V, DC, Negative earth



OPERATING WEIGHT (Travel)

18770 kg



AXLE LOADING (Travel)

Rear Axle 10100 kg  
Front Axle 8670 kg



OVERALL DIMENSIONS

Height 3100 mm  
Width 2840 mm  
Length 11450 mm



SAFETY SYSTEM

Safe Load Indicator with Hydraulic cut off  
Safety Brakes on Hoist  
Hose Protection Failure Device  
Rope Compensating Snatch block  
Equipment Monitoring System  
Rear view Camera With LCD,  
Battery cut off Switch



STANDARD ACCESSORIES

All Weather Cabin  
Mobile Charger  
Rear View Mirror  
Turn & Reverse lamp  
Fly Jib  
Rhino Hook  
Tyre Guard



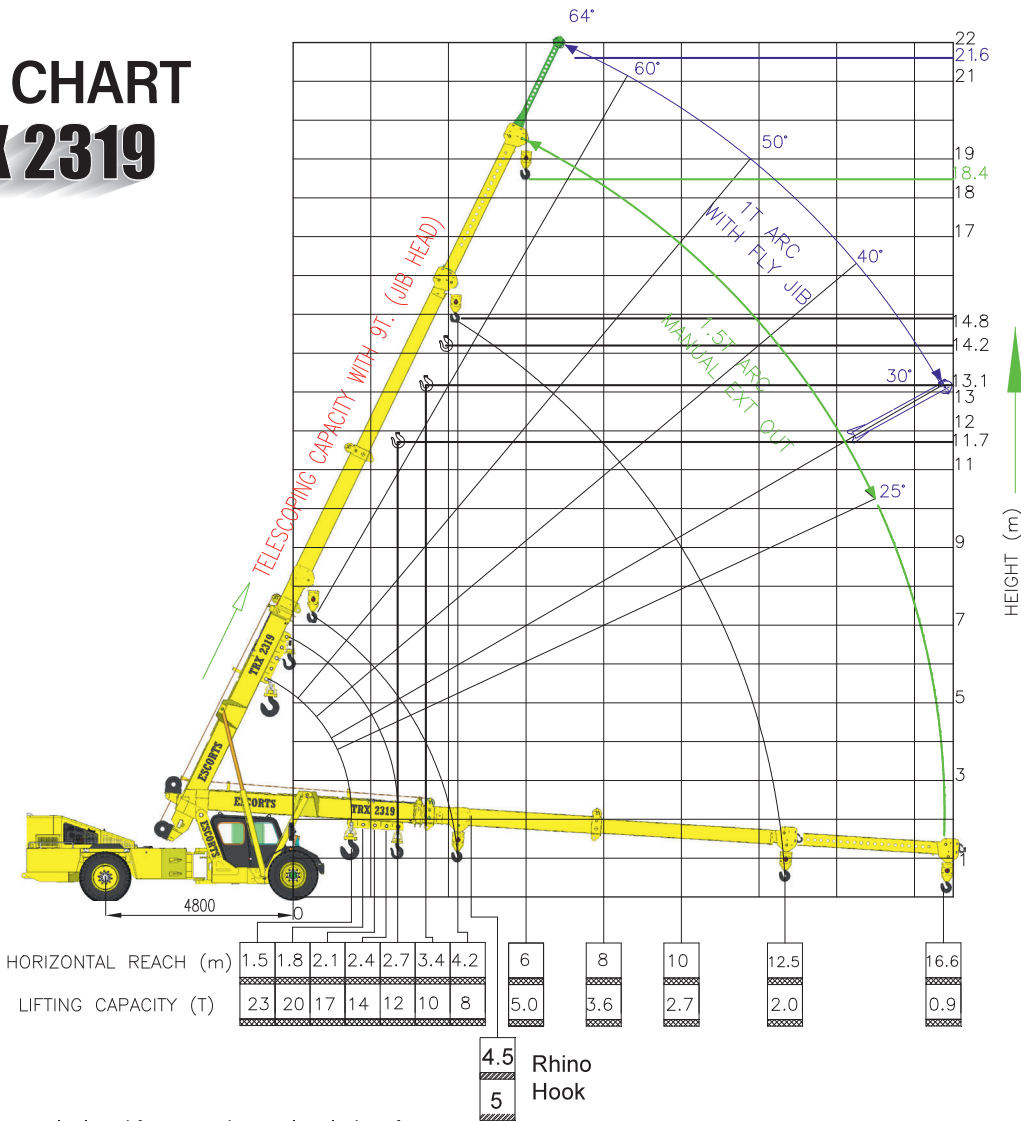
OPTIONAL ACCESSORIES

AC Cabin  
Fire Extinguisher

- Tyres to be inflated with recommended air pressure
  - Front tyres (Dual) - 7 bar (Air Pressure)
  - Rear tyres (Single) - 7 bar (Air Pressure)
- Travel speed with load (Creep) - Not to exceed 2 kmph
- Weight of chains, slings and tackles to be considered extra

TRX 2319

LOAD CHART  
TRX 2319



Rated loads are calculated for operation on leveled surface.

TRX 2319: DIMENSIONS (Ref.) & AREA OF OPERATION

