

F17

NOW WITH

VECV-494 BS-IV series engine

COMFORTABLE	LOW PEDAL FORCE
ECONOMICAL	XTRA FUEL SAVING
DURABLE	XTRA CLUTCH LIFE
POWERFUL	47% HIGH BACKUP TORQUE
ADVANCE	500 HRS SERVICE INTERVAL



Capacity
17 T



Boom Height
(with fly jib)
21 M



Snatch Block
Heavy Duty
(6 Falls)



Creep Speed
1.3 kmph



Structure
Heavy Duty



Speed
49 kmph

SPECIFICATIONS



RATED CAPACITY

17 Tonne at	1.5 m radius
1 Tonne at	15.80 m radius
Max Hook Height	18.2 m
SWL based on 85% stability and strength (IS 4573)	



VEHICLE PERFORMANCE

Speed Max	49 kmph
Creep Speed	1.3 kmph
Gradeability	40% unladen



DRIVE

4 Wheel Drive



ENGINE (BS IV)

Volvo - Eicher make CEV BS IV Diesel Engine, Model E494TCI - High Pressure Common Rail System (HPCR) Technology, Turbo Charged Water Cooled, ECU Control Engine Management System, Developing 74 Kw/101HP @ 2200 RPM or Equivalent Engine.



TRANSMISSION & CLUTCH

Engine is coupled with Synchromesh Transmission Gear Box and Auxiliary Gear Box with high/low & 2WD/4WD mode selector

Clutch Single, dry type friction clutch plate (self adjusting)

Clutch Actuation Pneumatic assisted Hydraulic clutch.

Speeds 10 Forward & 2 Reverse



BRAKES

Service	Fully air operated 'S' cam dual circuit brakes on front & rear axles
Parking	Air operated, spring actuated, fail safe brakes



AXLES

Front	Rigidly mounted
Rear	Mounted with two semi-elliptical springs



TYRES

8 nos. - 11 x 20 - 16 PR



HYDRAULIC SYSTEM

Main pump of 46 cc/rev
Control Valve - 6 spool double acting with a built in relief & auxiliary valves



HOIST

Hydraulically operated with 6 falls, built in safety brakes



STEERING

Full power orbitrol with twin hydraulic double acting 40° articulation on either side



ELECTRICAL SYSTEM

24 V, DC



BOOM

4 parts Slotted Boom with 3 parts hydraulically powered & fully synchronized, 4th part power extended and manually pinned for safety.

Luffing Range -10° to +65°



DIMENSIONS

Wheel Base	3950 mm
Overall Length	10075 mm
Overall Width	2450 mm
Overall Height	3215 mm
Front Wheel Track	1825 mm
Rear Wheel Track	1825 mm



OPERATING WEIGHT

Front Axle	6760 kg
Rear Axle	10150 kg
Total	16910 kg



TURNING RADIUS

7.2 m



STRUCTURE AND STABILITY

Robust high strength light weight chassis
Lower CG position & better stability



STANDARD ACCESSORIES

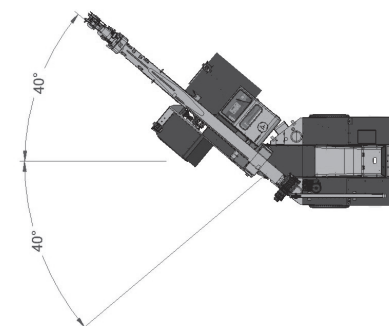
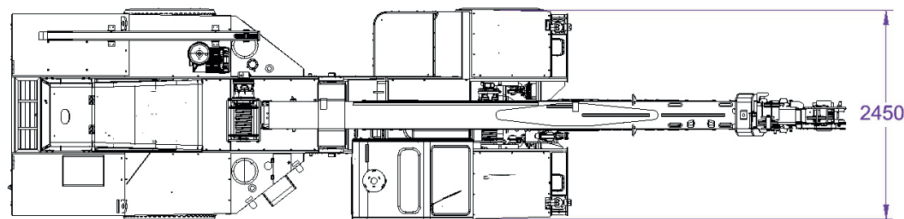
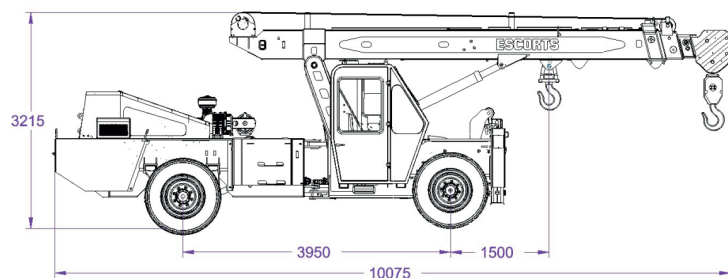
Fly jib	Tyre Guard, Battery cut off Switch
Outriggers	Rear View Camera (Display)



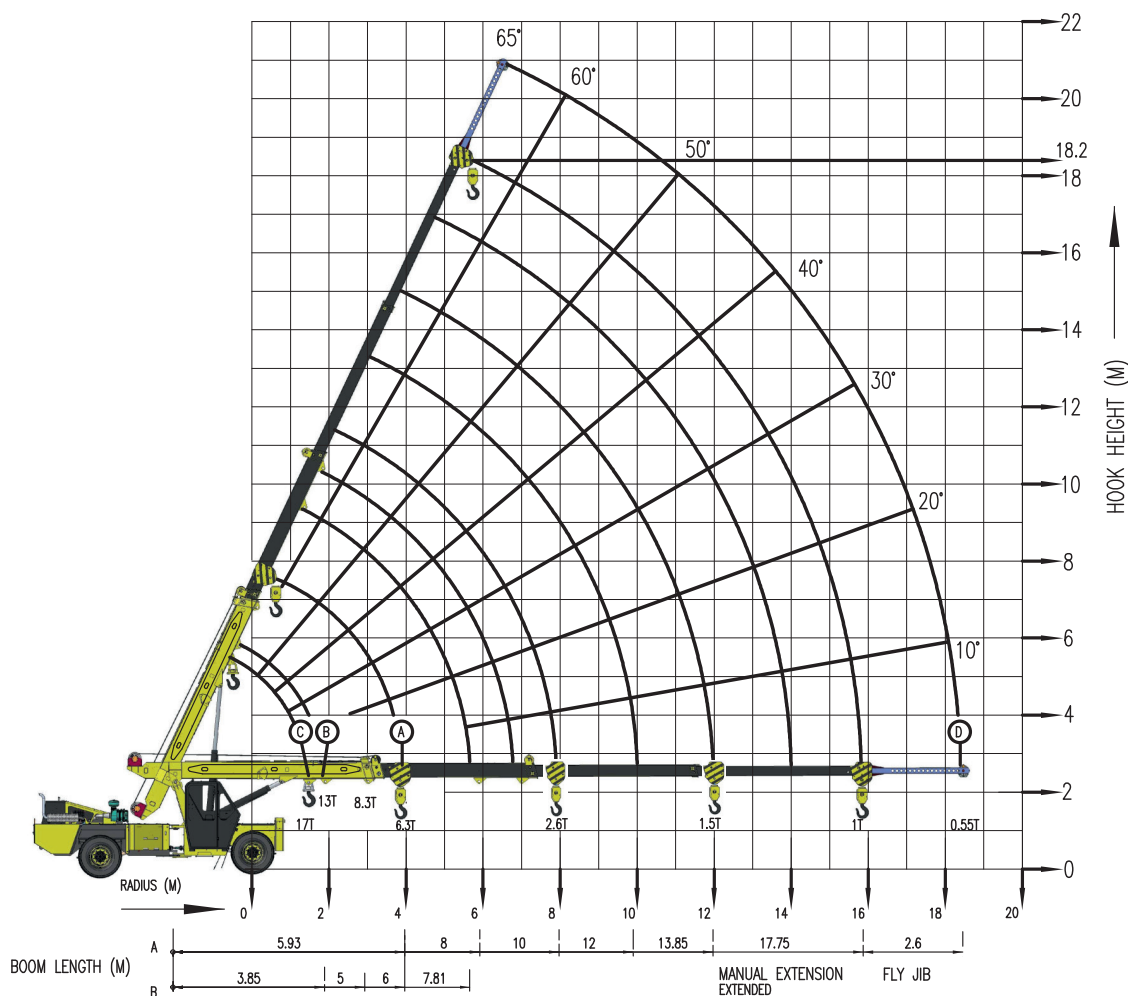
OPTIONAL ACCESSORIES

AC Cabin	Drag Winch
Rhino Hook	SLI with Hydraulic Cutoff
Beacon Light	Helper Seat with Platform
Fire Extinguisher	Man Carrying Basket
Equipment Monitoring System (EMS)	

F17: DIMENSIONS (Ref.) & AREA OF OPERATION



LOAD CHART F 17



Radius (M)	A					
	BOOM LENGTH IN METERS - MANUAL EXTENSION RETRACTED					MANUAL EXTENSION EXTENDED
	5.93	8	10	11	13.85	17.75
2	8250	8250	8250			
3	8250	8250	7590	5720		
4	6325	6270	5577	4950	4365	
5		4850	5200	4400	3800	1850
6		3950	3850	3800	3400	1700
7			3150	3150	3000	1600
8			2650	2725	2640	1540
9				2340	2280	1450
10					1950	1375
11					1705	1290
12					1485	1245
13						1220
16						990
18						

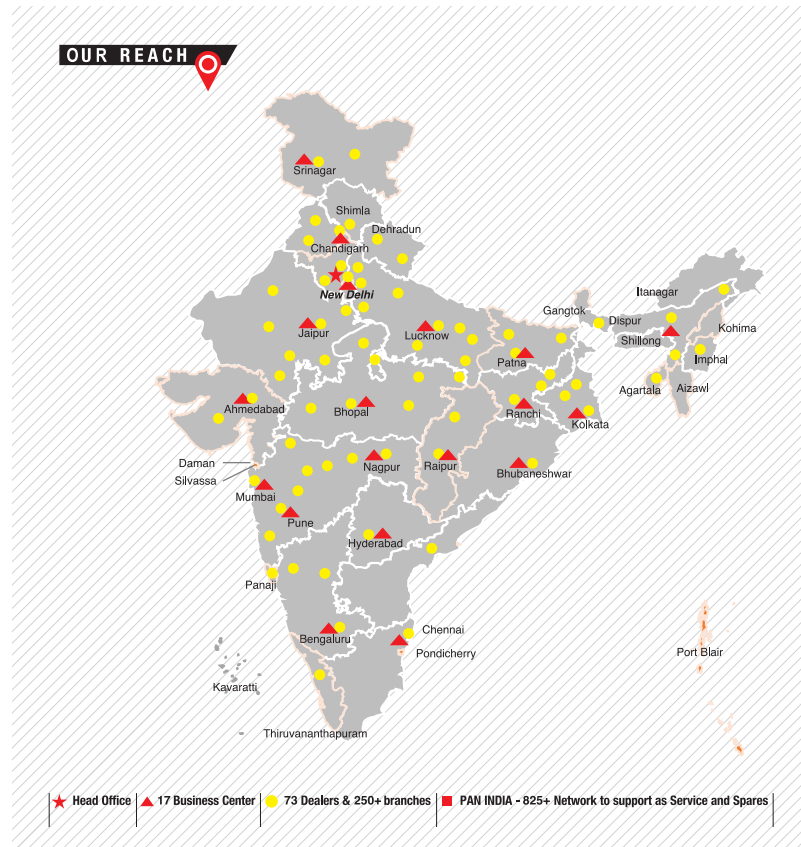
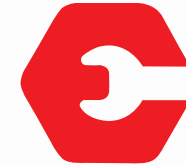
B			
BOOM pivot to inner lug ist jib extn, manual extn. retracted			
3.85	5	6	7.81
13200	12100	12100	11600
	7700	7700	7370
		5280	5225
			3925

C	
17T LUG	
BOOM FULLY RETRACTED	
RADIUS (M)	S.W.L (kg)
1.5	17000

D FLY JIB (BOOM EXTENDED)	
820	
820	
770	
770	
660	
710	
660	
550	

- RADIUS IS THE HORIZONTAL DISTANCE MEASURED FROM THE CENTRE OF FRONT WHEEL TO THE LOAD POINT
- S.W.L. ARE BASED ON 85% STABILITY & STRENGTH
- S.W.L. ARE BASED ON FIRM LEVEL GROUND WITH TYRES 11X20X16 PLY INFLATED TO 115 PSI, WEIGHT OF HOOKS BLOCKS, SLINGS & CHAIN ETC. INCLUDED.
- LIFT & CARRY - THE S.W.L. SHALL BE CARRIED WITH THE MINIMUM BOOM LENGTH & AS CLOSE TO THE GROUND AS POSSIBLE AT SPEED NOT IN EXCESS OF 2 KMPH.
- BOOM HEAD MOUNTED RHINO HOOK CAPACITY-6000 KG

Rated load are calculated for operation on leveled surface.



ADDRESS:

North Zone

ESCORTS LTD. - CONSTRUCTION EQUIPMENT
4th Floor 409, Jasola Vihar,
Elegance Tower, Near Apollo Metro Station,
New Delhi -110019

East Zone

ESCORTS LTD. - CONSTRUCTION EQUIPMENT
Eco Centre, Ambuja Neotia,
609, 6th Floor, EM Block,
Salt Lake Sector-V, Kolkata – 700091

West Zone

ESCORTS LTD. - CONSTRUCTION EQUIPMENT UNIT 1,
3rd Floor, A-Wing, Times Sqaure,
Andheri - Kurla Road, Opp. Mittal Industrial Estate,
Andheri (East), Mumbai 400059 (Maharashtra)

South Zone

ESCORTS LTD. - CONSTRUCTION EQUIPMENT
Subham Square, 1st Floor, S.No.41/9, 1st Main Road,
Karambakkam, Porur, Chennai, Tamilnadu – 600116.
Mobile: +91 96508 11337
Lan No : +91-44-42153707 , +91-44-42153710.



Toll Free No.:
1800-180-4488
(Timings: 9.30 am - 6.00 pm, Monday to Friday)

Escorts Construction Equipment: Plot No. 219, Sector-58, Ballabhgarh- 121004, Faridabad, Haryana (INDIA) Tel.: 0129-2306574/2306598/2306571
Fax: 0129-2306572 **Website:** www.escortsgroup.com

e-mail: ece.help@escorts.co.in

• The information contained in this leaflet is intended to be of a general nature only. • We reserve the right to change specifications without notice. • All Dimensions and weights are variable within +/-5%.



GET IT ON
Google Play
Download Customer App
for more details

Authorised Dealer