

NOW WITH

VECV-494 BS-IV series engine

COMFORTABLE

LOW PEDAL FORCE

ECONOMICAL

XTRA FUEL SAVING

DURABLE

XTRA CLUTCH LIFE

POWERFUL

47% HIGH BACKUP TORQUE

ADVANCE

500 HRS SERVICE INTERVAL

SAFE

DESIGNED ON 75 % RATED LOAD



Capacity
14 T



Boom Height
(with fly Jib)
21 M



Structure
High Strength



Creep Speed
1.3 kmph



Turning Radius
Shortest

SPECIFICATIONS



RATED CAPACITY

14 Tonne at	1.5 m radius
900 kg at	15.80 m radius
Max Height	18.20 m
SWL based on 75% Stability & Strength	



VEHICLE PERFORMANCE

Speed Max	49 kmph
Creep Speed	1.3 kmph
Gradeability	40% unladen



DRIVE

4 Wheel Drive



ENGINE (BS IV)

Volvo - Eicher make CEV BS IV Diesel Engine, Model E494TCI - High Pressure Common Rail System (HPCR) Technology, Turbo Charged Water Cooled, ECU Control Engine Management System, Developing 74 Kw/101HP @ 2200 RPM or Equivalent Engine.



TRANSMISSION & CLUTCH

Engine is coupled with Synchromesh Transmission Gear Box and Auxiliary Gear Box with high/low & 2WD/4WD mode selector

Clutch	Single, dry type friction clutch plate (self adjusting) Clutch Accusation Pneumatic assisted Hydraulic clutch.
Speeds	10 Forward & 2 Reverse



BRAKES

Service	Fully air operated 'S' cam dual circuit brakes on front & rear axels
Parking	Air operated, spring actuated, fail safe brakes



AXLES

Front	Rigidly mounted
Rear	Mounted with two semi-elliptical springs



TYRES

8 nos.-11 x 20-16PR



STEERING

Full power orbitrol with twin hydraulic double acting rams
40° articulation on either side



ELECTRICAL SYSTEM

24 V Negative Earth, 75 AH x 2 Battery



BOOM

4 parts boom, 3 parts hydraulically powered & fully synchronized, 4th part power extended & manually pinned for safety.
Luffing range - 10° to + 65°



HOIST

Hydraulically operated with 4 falls
Built in safety brakes



DIMENSIONS

Wheel Base	3950 mm
Overall Length	9725 mm
Overall Width	2450 mm
Overall Height	3215 mm
Front Wheel Track	1825 mm
Rear Wheel Track	1825 mm



OPERATING WEIGHT

Front Axle	6820 kg
Rear Axle	9200 kg
Total	16020 kg



TURNING RADIUS

7.2 m



STRUCTURE & STABILITY

Robust high strength light weight chassis
Lower CG position & better stability



STANDARD ACCESSORIES

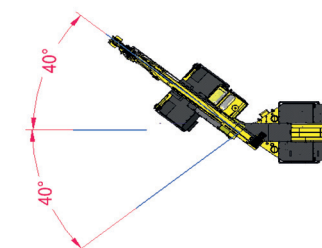
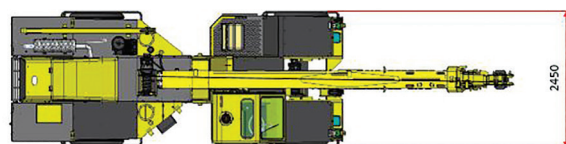
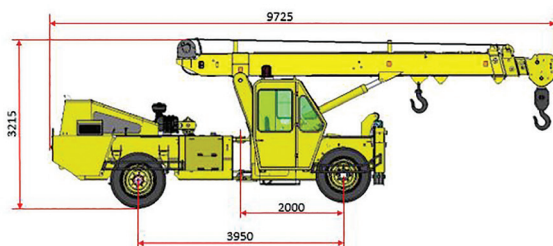
Fly Jib	Tyre Guard, battery cut off switch
Outriggers	Rear View Camera (Display)



OPTIONAL ACCESSORIES

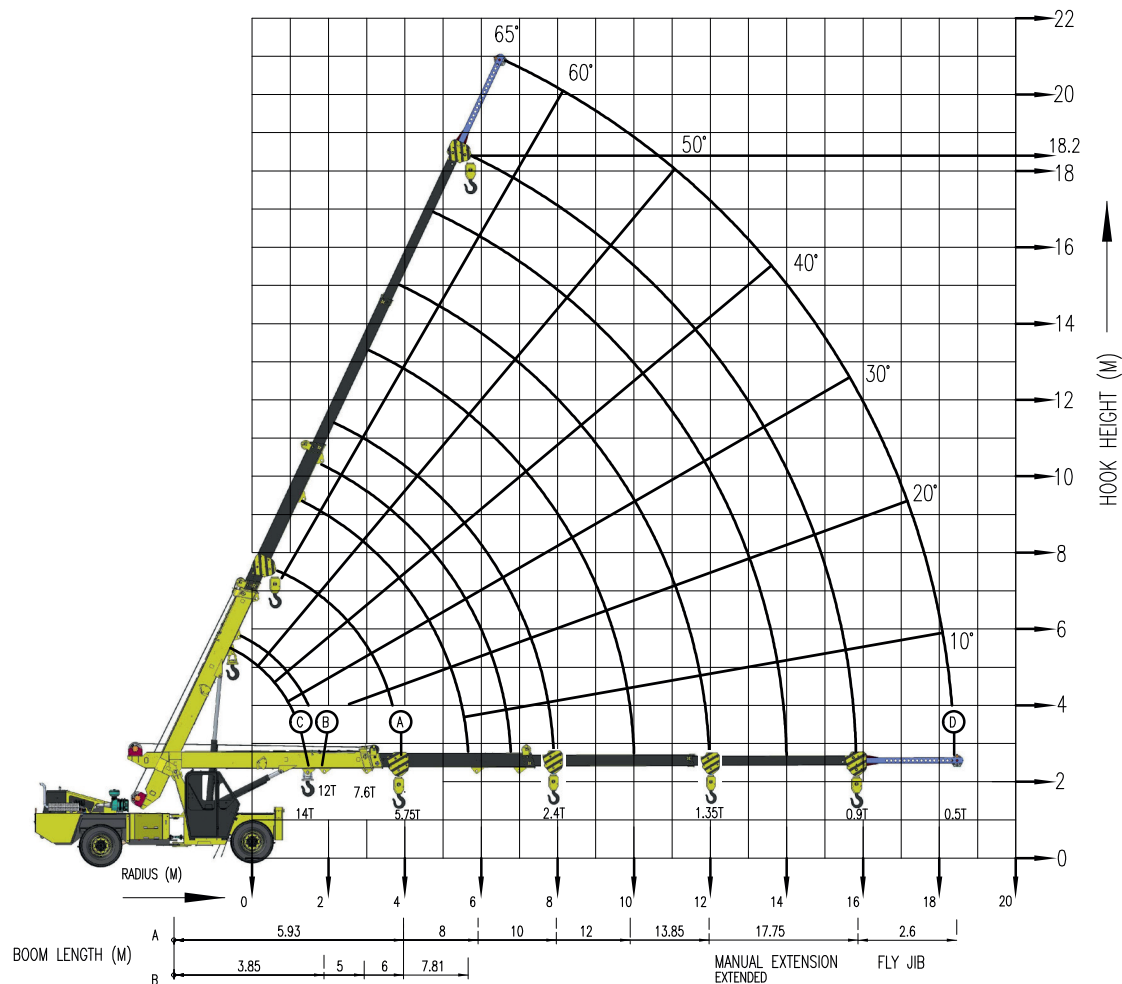
AC Cabin	Drag Winch
Rhino Hook	SLI with Hydraulic Cutoff
Beacon Light	Helper Seat with Platform
Fire Extinguisher	Man Carrying Basket
4x2 Wheel Drive	Spreader Bar
Equipment Monitoring System (EMS)	

F15: DIMENSIONS (Ref.) & AREA OF OPERATION



LOAD CHART F15

SWL BASED ON 75%
STABILITY & STRENGTH



RADIUS (M)	A					
	BOOM LENGTH IN METRES – MANUAL EXTENSION RETRACTED					MANUAL EXTENSION EXTENDED
	5.93	8	10	12	13.85	17.75
2	7500	7500	7500			
3	7500	7500	6900	5200		
4	5750	5700	5070	4500	3970	
5		4400	4760	4000	3460	1680
6		3600	3525	3475	3100	1575
7			2900	2900	2750	1475
8			2400	2478	2400	1400
9				2130	2080	1320
10					1775	1250
11					1550	1180
12					1350	1135
13						1110
16						900
18						

B			
BOOM PIVOT TO INNER LUG 1ST JIB EXTN. MANUAL EXTN. RETRACTED			
3.85	5	6	7.81
12000	11000	11000	10550
	7000	7000	6700
		4800	4750
			3570

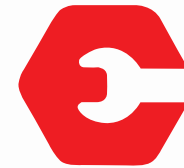
C	
14T LUG	
BOOM FULLY RETRACTED	
RADIUS (M)	S.W.L (KG)
1.5	14000

D FLY JIB(BOOM FULLY EXTENDED)	
750	
750	
700	
700	
600	
650	
600	
500	

- * RADIUS IS THE HORIZONTAL DISTANCE MEASURED FROM THE CENTRE OF FRONT WHEEL TO THE LOAD POINT
- * S.W.L. ARE BASED ON 75% STABILITY & STRENGTH
- * S.W.L. ARE BASED ON FIRM LEVEL GROUND WITH TYRES 11x20x16 PLY INFLATED TO 115 PSI, WEIGHT OF HOOKS, BLOCKS, SLINGS & CHAIN ETC. INCLUDED.
- * LIFT & CARRY – THE S.W.L. SHALL BE CARRIED WITH THE MINIMUM BOOM LENGTH & AS CLOSE TO THE GROUND AS POSSIBLE AT SPEEDS NOT IN EXCESS OF 2 KM/H.
- * BOOM HEAD MOUNTED RHINO HOOK CAPACITY–6000 Kg

Rated loads are calculated for operation on leveled surface.

FEATURES



HYDRAULIC CLUTCH

Low effort hydro pneumatic clutch to reduce operator fatigue.

ELECTRONIC ACCELERATOR PEDAL

Accelerator Pedal - Low effort electronic accelerator pedal reduce operator fatigue.

ECU EMS SYSTEM

ECU EMS – Electronic Control Unit for Engine Management System for Engine diagnosis and troubleshoot.

IGNITION ON/ OFF

Ignition key to switch off engine, no more use of stop cable to engine put off.



HPCR SYSTEM

HPCR – High Pressure Common Rail System - HPCR provide cleaner exhaust, deliver more horsepower and fuel efficiency per displacement.

ROCKER SWITCHES

Rocker Switch with more reliable and better aesthetic appearance, low operator fatigue.

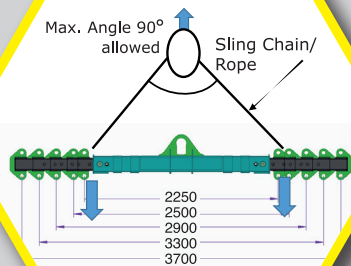
CLUSTER

Single Digital Cluster with all gauges, fault code detection for engine system, date and time display feature, less number of wiring harness.

*Photo may be change w.r.t actual in equipment



ACCESSORIES



SPREADER BAR CUM LIFTING BEAM

Spreader Bar is used to aid crane operators in picking up large and sometimes heavy loads. It increase the stability and handling of load during hoisting and traveling with load.

Lifting Capacity- 5 Tonnes to 15 Tonnes
(depending on the crane load chart)

Beam Expend Range: 2250 mm to 3700 mm

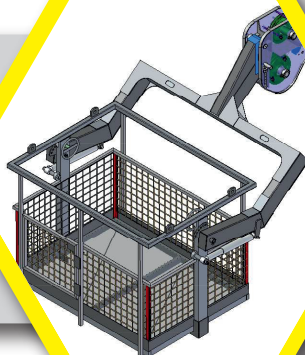
Note: Attachment view is for ref. only. Physical part may be differ from provided.

MAN CARRYING BASKET

ATTACHMENT SPECIFICATION		
ATTACHMENT WEIGHT	KG	240
MAX. CAPACITY	KG	235
NO. OF PERSONS.	N°	2
PLATFORM LENGTH	mm	1440
PLATFORM WIDTH	mm	1070

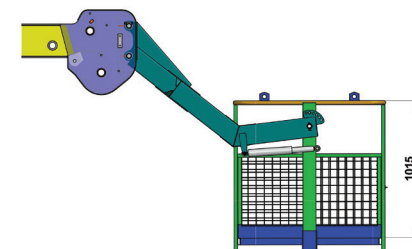
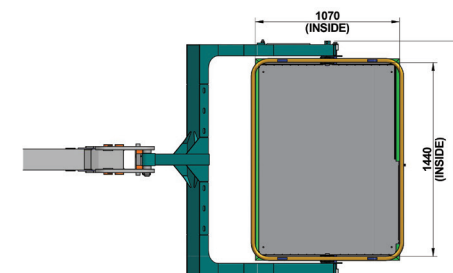
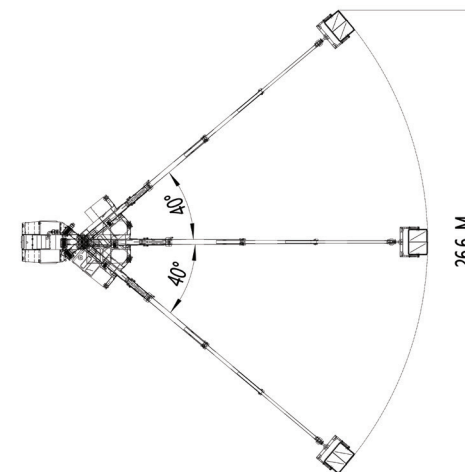
Intended use

The machine has been designed to lift people and handle small tool, max load 235 kg or 2 persons

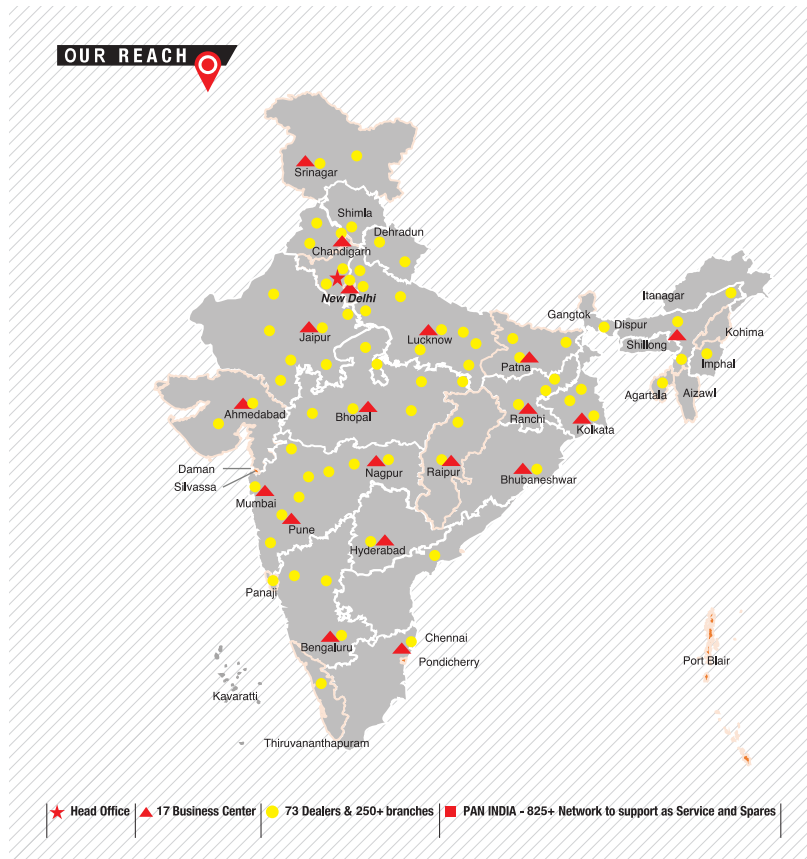
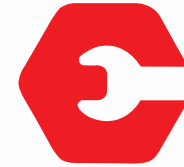


BE CAREFUL!

When in the firm the same machine is to be used by more than one operator, working instructions as well as the use and maintenance manual must be conveyed to all the operators in charge of the machine.



ATTACHMENT DIMENSIONS



ADDRESS:

North Zone

ESCORTS LTD. - CONSTRUCTION EQUIPMENT
4th Floor 409, Jasola Vihar,
Elegance Tower, Near Apollo Metro Station,
New Delhi - 110019

East Zone

ESCORTS LTD. - CONSTRUCTION EQUIPMENT
Eco Centre, Ambuja Neotia,
609, 6th Floor, EM Block,
Salt Lake Sector-V, Kolkata – 700091

West Zone

ESCORTS LTD. - CONSTRUCTION EQUIPMENT UNIT 1,
3rd Floor, A-Wing, Times Sqaure,
Andheri - Kurla Road, Opp. Mittal Industrial Estate,
Andheri (East), Mumbai 400059 (Maharashtra)

South Zone

ESCORTS LTD. - CONSTRUCTION EQUIPMENT
1st Floor, Bearing No - FF 2, in Subham Square,
Survey Number 41/9, 1st Main Road and 1st Street,
Tarambakkam, Porur,
Chennai - 600116



Toll Free No.:
1800-180-4488
(Timings: 9.30 am - 6.00 pm, Monday to Friday)

Escorts Construction Equipment: Plot No. 219, Sector-58, Ballabhgarh- 121004, Faridabad, Haryana (INDIA) Tel.: 0129-2306574/2306598/2306571
Fax: 0129-2306572 **Website:** www.escortsgroup.com

e-mail: ece.help@escorts.co.in

• The information contained in this leaflet is intended to be of a general nature only. • We reserve the right to changed specifications without notice. • All Dimensions and weights are variable within +/-5%.



GET IT ON
Google Play
Download Customer App
for more details

Authorised Dealer