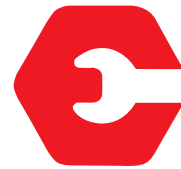
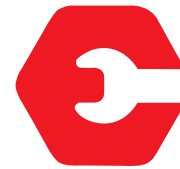


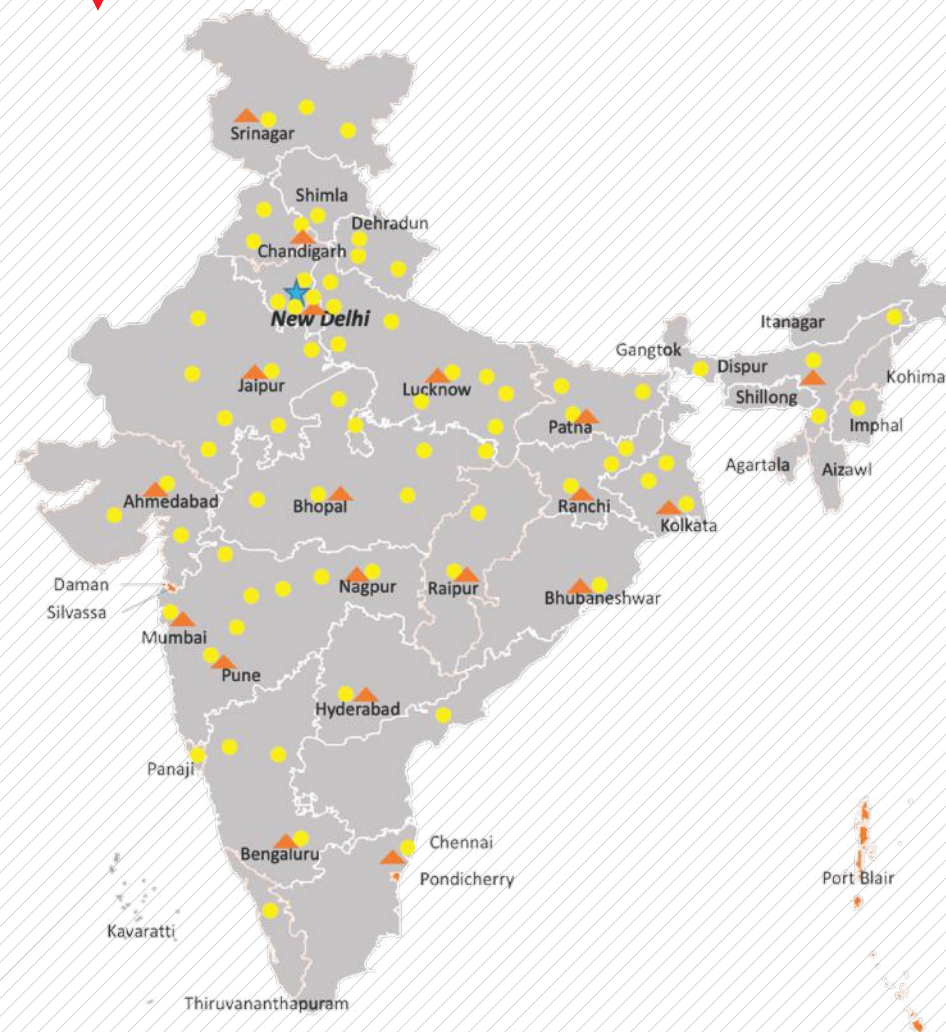
HYDRA 13 36



ESCORTS



OUR REACH



★ Head Office | ▲ 17 Business Center | ● 73 Dealers | ■ 825+ Customer Touch points (CTP)



Toll Free No.:
1800-180-4488

(Timings: 9.30 am - 6.00 pm, Monday to Friday)
e-mail: ece.help@escorts.co.in

Escorts Kubota Limited (Formerly Escorts Limited) Construction Equipment
Plot No. 219, Sector- 58, Ballabhgarh- 121 004, Faridabad, Haryana (INDIA)
Tel.: 0129-2306574/2306598/2306571
Fax: 0129-2306572 Website: www.escortsgroup.com



Download Customer App for more details

Authorised Dealer

MKT/22/Hydra 13 36

(Accessories as shown in the picture may not be the part of standard fitment and are subject to change without prior notice.)

HYDRA 13 36



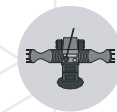
Capacity
13 T



Boom Height
36 Feet



Straight Axle
Heavy Duty



Transmission
Robust

SPECIFICATIONS

**RATED CAPACITY**

13 Tonne at	1.7 m radius
2.3 Tonne at	8.2 m radius

**ENGINE**

Make & Model	Simpson S 433 (I) – CEV BS III, 4 cylinder, water cooled diesel engine developing 48 HP @ 2200 RPM or equivalent
--------------	--

**TRANSMISSION**

Drive	2 Wheel drive
Type	Heavy duty transmission developed especially for crane application. Constant mesh gearbox coupled with straight drive axle. Eight forward and two reverse speeds with high/low selector lever
Max. Speed	29 km/hr. (unladen)
Clutch	Heavy duty clutch, wire woven, asbestos free

**STEERING**

Type	Articulated power steering, hydraulically controlled through 2 double acting jacks
Articulation	Up to 50°
Turning Radius	Approx 6.75 m

**HOIST MECHANISM**

Hoist	Hydraulic winch. Four falls. Rope dia 13 mm
-------	---

**BRAKES**

Front Wheel	Pneumatic assisted hydraulic brakes
Rear Wheel	Disk brakes actuated through a slave cylinder
Parking	Hand control valve operated, Air assisted Hydraulic parking brakes at rear wheels (Standard models) Hand control valve operated, Air assisted Parking brakes at Front wheels (with Air brake models)

**HYDRAULIC SYSTEM**

Pump	Vane type hydraulic pump
Control Valve	4 spool control valve with built in pressure relief valve and precision control
Hydraulic Filter	Suction line has a 100 mesh inline strainer while return line has 25 microns full flow filter

**ELECTRICAL SYSTEM**

Type	12V Single battery, Negative earth
------	------------------------------------

**CAPACITIES**

Fuel Tank	38 ltrs.
Hydraulic Tank	65 ltrs.

**TRACK**

Front	1980 mm
Rear	1680 mm

**OVERALL DIMENSIONS**

Length	11000 mm
Width	2550 mm
Height	3100 mm

**OPERATING WEIGHT (KG)**

Gross vehicle weight	10610 kg
----------------------	----------

**BOOM**

Telescoping	3 parts hydraulically powered & fully synchronized
Derricking	Through double acting jacks

**TYRES**

Front	10.00 X 20 -16 PR (4 nos.), inflation pressure 110 –115 PSI
Rear	13.00 X 24 -12 PR (2 nos.), inflation pressure 35 PSI. Water ballasted

**SAFETY SYSTEM**

- Overload audio warning system
- Safety brakes on hoist
- Cylinder guard for protection
- Rope compensation for auto leveling
- Counter balance protection valve in the lift line against hose burst
- Visual warning against parking brakes ON

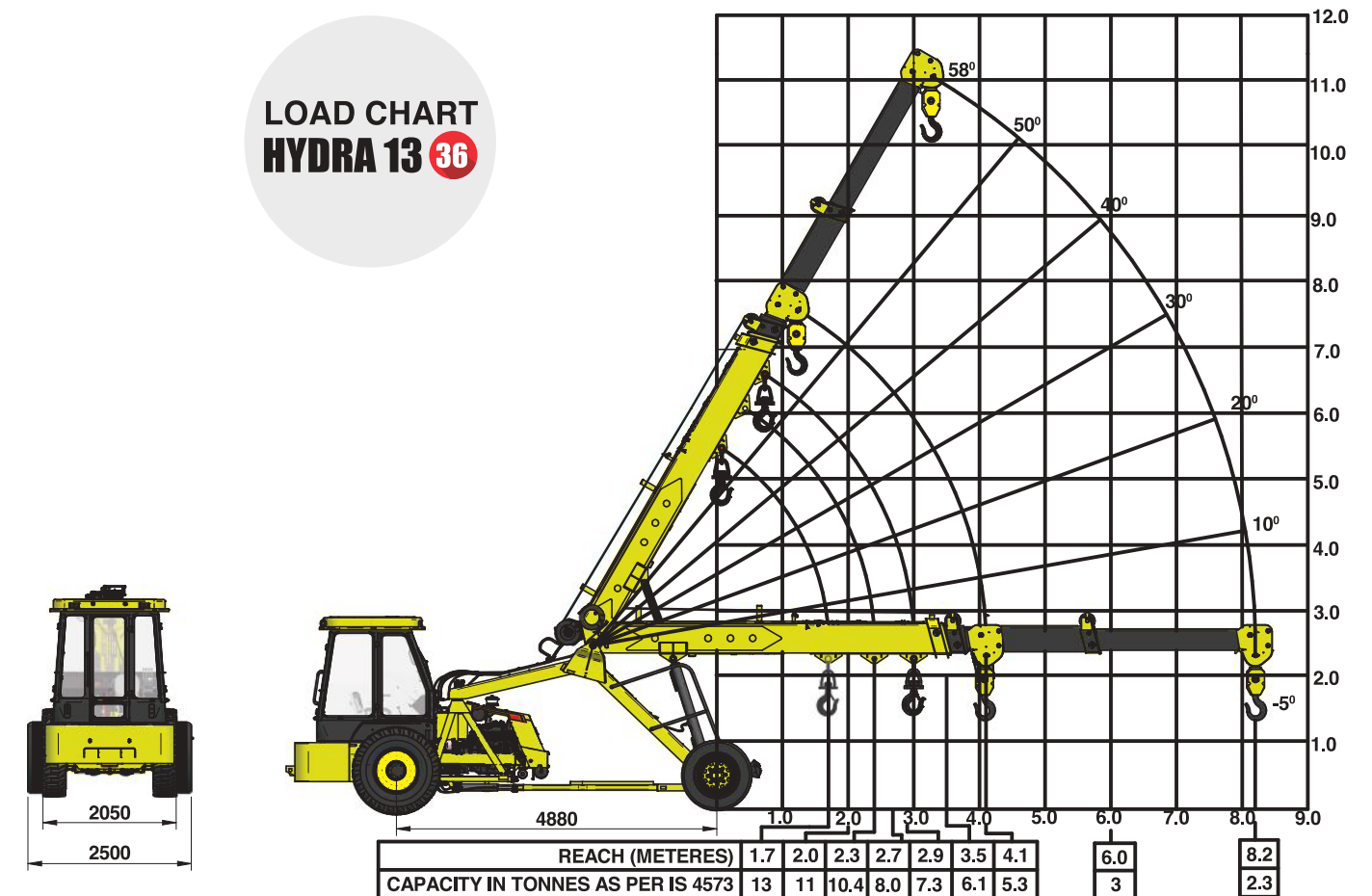
**STANDARD ACCESSORIES**

- All Weather Cabin
- Lift Cylinder Guard
- Turn & Reverse Lamp
- Front Bumper
- Rear View Mirror
- Reflectors

**OPTIONAL ACCESSORIES**

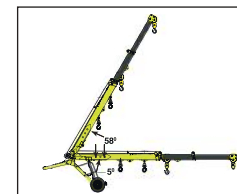
- Fly Jib
- Tool Box
- Spark Arrestor
- Tyre Guard
- Steering Wheel
- Fire Extinguisher
- Safe Load Indicator (SLI)
- Heavy Duty Bumper
- 14 x 24 Heavy Duty Tyres
- Air Brakes on Front Wheel
- Over Hoist & Hydraulic Cutoff Kit

HYDRA 13 36

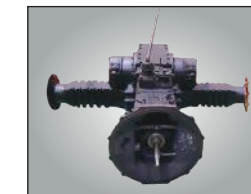


Rated loads are calculated for operation on leveled surface.

FEATURES

**LUFFING RANGE**

Boom Luffing Range -5° to 58°

**TRANSMISSION**

Heavy duty straight axle with constant mesh transmission.

**CABIN**

Ergonomically designed spacious cabin with modern dashboard for utmost operator comfort and operation.

**REAR BRAKES**

Disc brakes at the rear for effective braking.

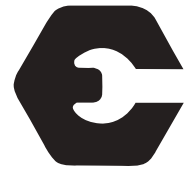
**INCREASED STABILITY**

At fully articulated condition. Wider lift cylinders' span (400 mm).

**ENGINE**

BS III (CEV compliant), category engine with high on power / torque & low on fuel consumption & maintenance.

HYDRA 13 ●



ESCORTS

