

ESCORTS



HYDRA 12^{EX}

2P



Capacity
12 T



Boom Height
27 Feet



Straight Axle
Heavy Duty



Structure
Robust

SPECIFICATIONS



RATED CAPACITY

12 Tonne at	1.5 m radius
3 Tonne at	6 m radius



ENGINE

Make & Model	Simpson S 433 (I) – CEV BS III, 4 cylinder, water cooled diesel engine developing 48 HP @ 2200 RPM or equivalent
--------------	--



TRANSMISSION

Drive	2 Wheel drive
Type	Heavy duty transmission developed especially for crane application. Constant mesh gearbox coupled with robust straight drive axle. Eight forward and two reverse speeds with high/low selector lever
Max. Speed	29 km/hr. (unladen)
Clutch	Heavy duty clutch, wire woven, asbestos free



STEERING

Type	Articulated power steering, hydraulically controlled through 2 double acting jacks
Articulation	Up to 56°
Turning Radius	Approx 6.25 m



HOIST MECHANISM

Hoist	Four fall, Hydraulic winch (Winch capacity 10T) Rope dia 13 mm
-------	--



BRAKES

Front Wheel	Pneumatic assisted hydraulic brakes
Rear Wheel	Internal expanding type Disc brake operated by slave cylinder
Parking	Hand control valve operated, Air assisted Hydraulic parking brakes at all wheels (Standard models) Hand control valve operated, Air assisted Parking brakes at Front wheels (with Air brake models)



HYDRAULIC SYSTEM

Pump	Pin Vane type hydraulic pump
Control Valve	4 spool control valve with built in pressure relief valve and precision control
Hydraulic Filter	Suction line has a 100 mesh in line strainer while return line has 25 microns full flow filter



ELECTRICAL SYSTEM

Type	12V Single battery, Negative earth
------	------------------------------------



CAPACITIES

Fuel Tank	38 ltrs.
Hydraulic Tank	65 ltrs.



TRACK

Front	1980 mm (center of twin wheels)
Rear	1680 mm (center of wheels)



OVERALL DIMENSIONS

Length	9880 mm
Width	2550 mm
Height	2900 mm



OPERATING WEIGHT (KG)

Gross Vehicle Weight	8850 kg
----------------------	---------



BOOM

Telescoping	Heavy duty, 2 parts box type hydraulically operated
Derricking	Through double acting jacks



TYRES

Front	11.00 X 20 - 16 PR (4 nos.)
Rear	13.00 X 24 - 12 PR (2 nos.)



SAFETY SYSTEM

- Overload audio warning system
- Safety brakes on hoist
- Cylinder guard for protection
- Overhoist audio warning system
- Hose protection failure device
- System Low air pressure warning buzzer



STANDARD ACCESSORIES

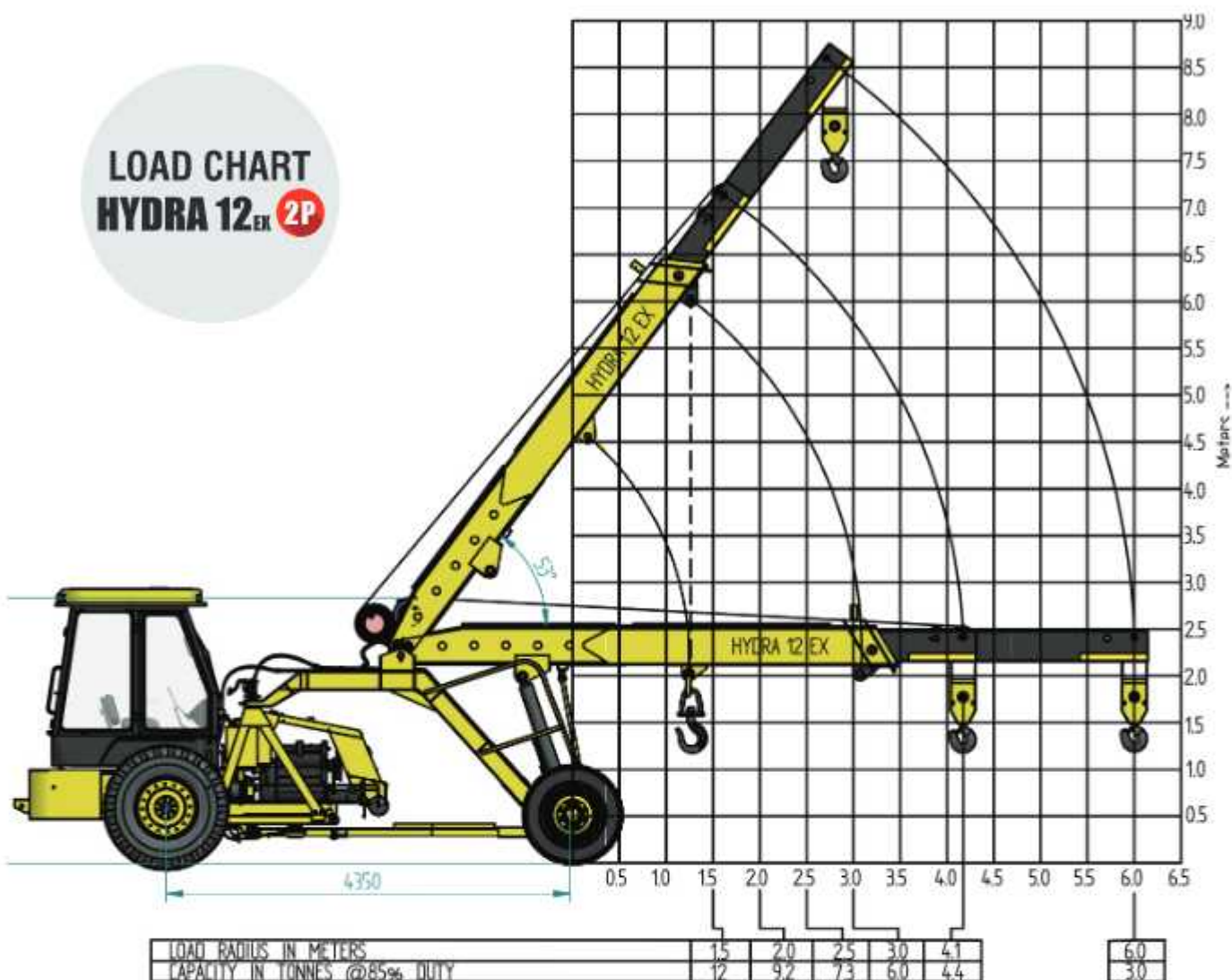
- All Weather Cabin
- Front Bumper
- Reflectors
- Lift Cylinder Guard
- Rear View Mirror
- Turn & Reverse Lamp



OPTIONAL ACCESSORIES

- Fly Jib
- Steering Wheel
- Spark Arrestor
- Heavy Duty Bumper
- Safe Load Indicator (SLI)
- 14 x 24 Heavy Duty Tyres
- Over Hoist & Hydraulic Cutoff Kit
- Tool Box
- Fire Extinguisher
- Tyre Guard

LOAD CHART HYDRA 12^{EX} 2P



Rated loads are calculated for operation on leveled surface.

FEATURES



RELIABILITY

Rugged structures for heavy duty application.



TRANSMISSION

Heavy duty straight axle with constant mesh transmission.



BOOM

12 Ton Capacity hook with Slotted Boom

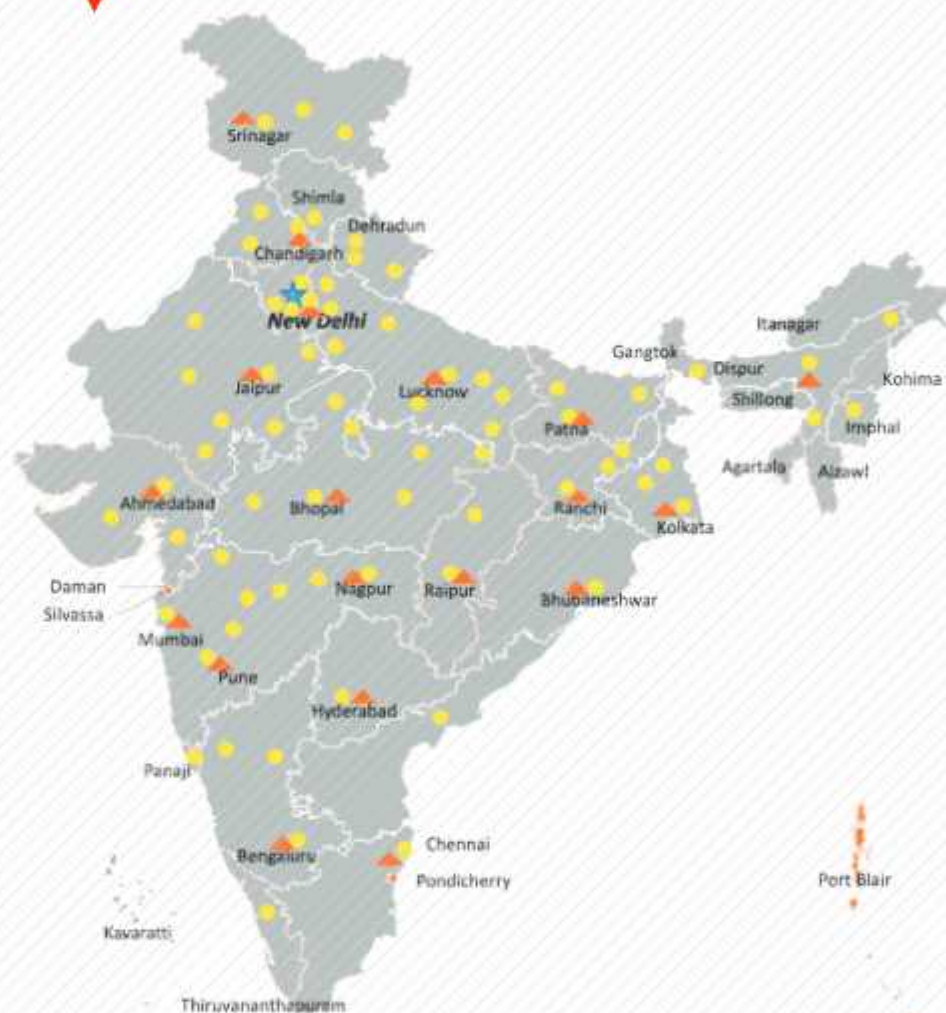


ENGINE

BS III (CEV compliant), category engine with high on power / torque & low on fuel consumption & maintenance.



OUR REACH



★ Head Office ▲ 17 Business Center ● 73 Dealers ■ 825+ Customer Touch points (CTP)



Toll Free No.:
1800-180-4488

(Timing: 9:30 am - 6:30 pm, Monday to Friday)

e-mail: eco.help@escorts.co.in

Escorts Kubota Limited (Formerly Escorts Limited) Construction Equipment
Plot No. 219, Sector- 58, Ballabhgarh- 121 004, Faridabad, Haryana (INDIA)
Tel.: 0129-2306574/2306598/2306571
Fax: 0129-2306572 Website: www.escortsgroup.com



GET IT ON
Google Play
Download Customer App
for more details.

Authorized Dealer